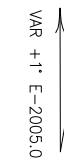


RWY	QFU	THR	bearing strength	Bearings are magnetic Distances in metres Elevation in ft AMSL Coordinates WGS84	AFIS
09	084°	N 45°44'16.61" E 007°21'28.70"	PCN 46 F/A/X/T		119.950
27	264°	N 45°44'20.99" E 007°22'37.75"			

AD ELEV 1796	AOSTA	
APRON ELEV 1785		
L I M W	45°44'18" N	007°22'03" E



Annual rate of change 5' E

REMARKS

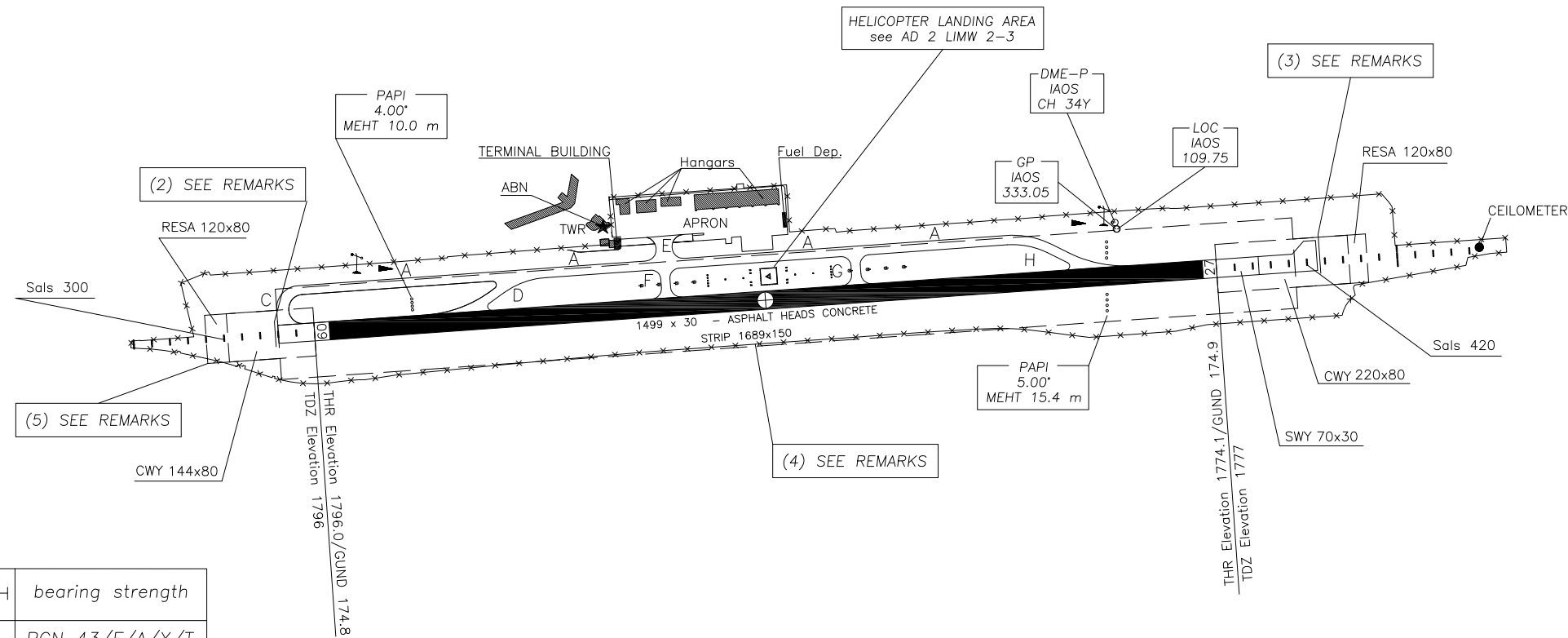
(1) PAPI REMARKS:
PAPI RWYs 09/27: PROTECTION 5 KM
PAPI RWY 27: OFF SET 3.6°

(2) 60 M BEYOND RWY 27 END
AVAILABLE FOR TAKE-OFF RWY 09,
ONLY ON PILOT'S REQUEST

(3) 167 M BEYOND RWY 09 END
AVAILABLE FOR TAKE-OFF RWY 27,
ONLY ON PILOT'S REQUEST

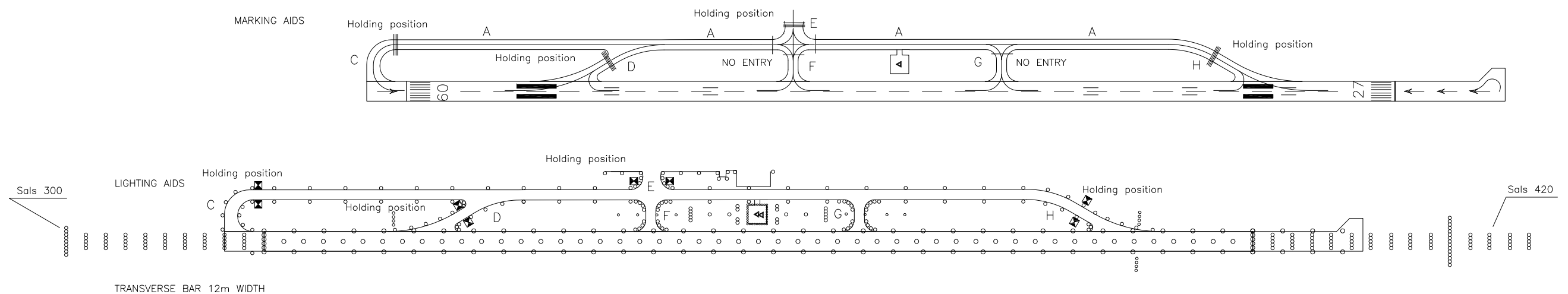
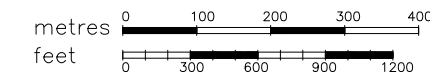
(4) FOR 400 M ALONG THE SOUTH SIDE
STRIP DIMENSION IN WIDTH IS REDUCED
TO 147 M

(5) ON THE SOUTH-WEST SIDE OF RESA,
TRIANGULAR PORTION OF DIMENSIONS
25x8 M IS NOT AVAILABLE



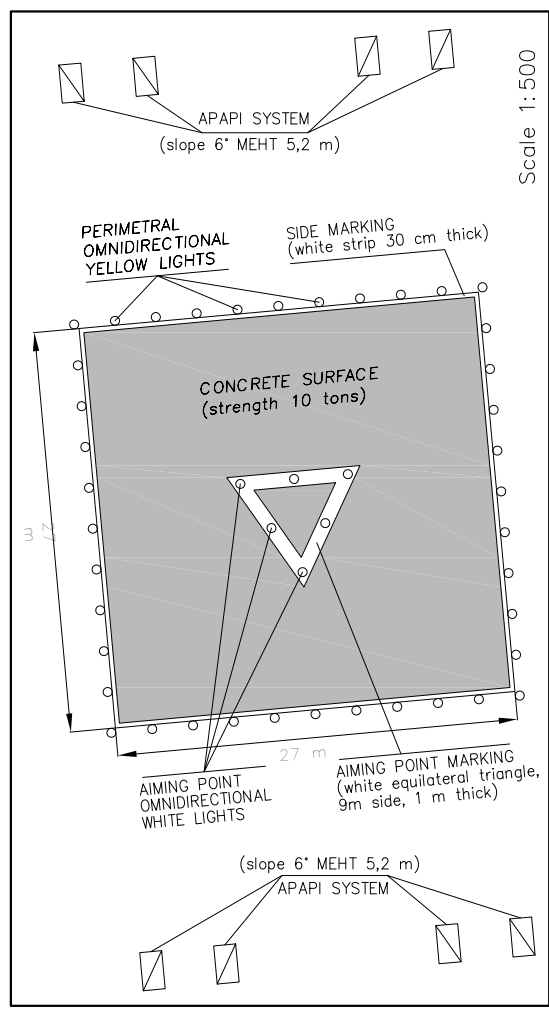
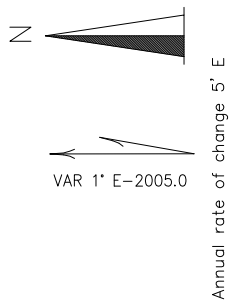
CHANGE: PAPI RWY 09 modified

TWY IDENT	WIDTH	bearing strength
A	15	PCN 43/F/A/X/T
C	20	PCN 47/F/A/X/T
D	15	PCN 45/F/A/X/T
E	15	PCN 43/F/A/X/T
F	15	PCN 36/F/A/X/T
G	15	PCN 35/F/A/X/T
H	15	PCN 41/F/A/X/T



Bearings are magnetic Distances in metres Elevation in ft AMSL Coordinates WGS84	AFIS 119.950	AD ELEV 1796	AOSTA	
			LIMW	45°44'18" N 007°22'03" E

HELICOPTER LANDING AREA	
Bearing	09-27
Coordinates	N 45°44'20" E 007°22'04"
Elevation	1780
Bearing strength	10 tons



CHANGE: AD elevation